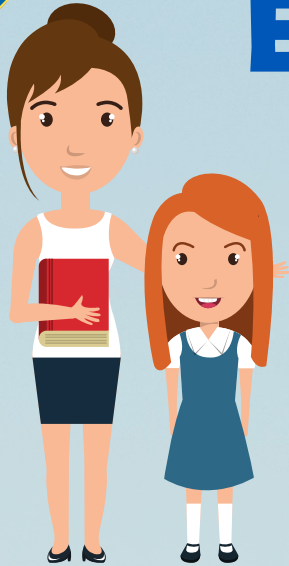


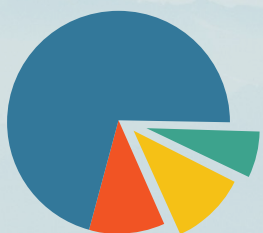
OUR SEVEN HABITS OF HIGHLY EFFECTIVE INSTRUCTION



STUDENT CENTERED INSTRUCTION

- Teacher as facilitator
- Personalized learning
- Focuses on learning vs teaching

USES DATA-INFORMED, RESEARCH-BASED STRATEGIES



- Committed to best practices
- Data-driven
- Supported by research



RELEVANT AND RIGOROUS

- Higher order questioning
- Cognitively complex tasks
- Real-world applications

ADDRESSES STANDARDS ALIGNED CONTENT



- Clearly defined objectives and outcomes
- Reflects curriculum map expectations
- Addresses PA core standards and eligible content

INTERACTIVE AND ENGAGING

- Full and active participation
- Positive climate
- Collaboration and communication



BUILDS UPON AND EXTENDS PRIOR KNOWLEDGE

- Sequential
- Extension and enrichment activities
- Makes connections



MEANINGFUL USE OF TECHNOLOGY AND LEARNING MATERIALS

- Enhances lessons
- Purposeful and interactive learning
- Increases learning and engagement